

SAME SAME....

Not just a new stapler.
A smart stapler.

Smart technology that gives you real-time feedback and powered rotation, articulation, and firing — with one hand.⁵

That's the Signia™ Stapler.

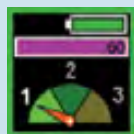


BUT DIFFERENT

See the feedback.
Get more consistent Staple lines.^{2-4,§,††}

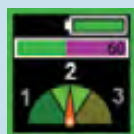
More information. Less guessing.

The Signia™ stapler provides real-time feedback when used with all Tri-Staple™ reloads. That means you get valuable information to help you make informed decisions^{1,†} — and much more.



A

Visual cues that show forces on tissue during clamp and correlate to the tactile feedback of a manual stapler.^{1,††} This can help you **assess load selection**.^{1,†,‡}



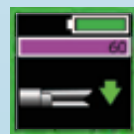
B

A gauge that measures forces during firing²⁻⁴ — and tells you when it's slowing down to **optimize staple formation** in challenging applications.^{2,3.}



C

Battery and system status, **fire-ready indicators**, and more



D

A built-in user's guide for **simplified setup**⁵



The Signia™ Stapling System

Please see the package insert for the complete list of indications, warnings, precautions, and other important medical information.
[†] Bench test results may not necessarily be indicative of clinical performance. [‡] P < 0.001. [§] Preclinical results may not correlate with clinical performance in humans.
[¶] 9 out of 10 surgeons surveyed after use agreed. ^{††} Compared to manual and fixed speed powered staplers. **Reference:** 1. Based on internal test report #RE00055515, Surgeon evaluation testing Signia™ stapling system sensing technology and real-time feedback. Aug. 4, 2016. 2. Based on internal test report #R2146-173-0, ASA verification testing with slow speed force limit evaluation. 2015. 3. Based on internal test report #R2146-151-0, Powered stapling firing speed DOE analysis and ASA parameters. 2015. 4. Based on internal report #RE00218740, Signia™ stapling adaptive firing technology data calculations and references. Aug. 7, 2019. 5. Based on internal test report #RE00024826, Signia™ stapling system summative usability report. rev. A. January 2016. © 2021 Medtronic. All rights reserved. Medtronic, Medtronic logo are trademarks of Medtronic.

Medtronic
Further, Together

A CELEBRATION OF THE PAST, THE PRESENT, AND THE FUTURE.



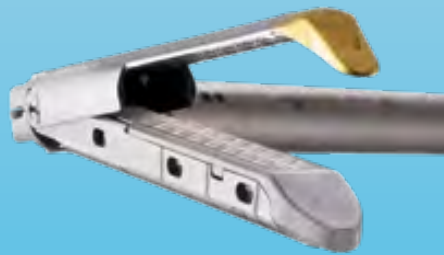
A CELEBRATION OF INNOVATION

Tri-Staple™ technology
A decade of continually
innovating for your procedures
today and tomorrow.



A CELEBRATION OF AGILITY

Tri-Staple™ technology
A decade of delivering stapling
solutions that rise to your
procedural challenges.



A CELEBRATION OF STRENGTH

Tri-Staple™ technology.
A decade of continually innovating
for your practice — and your
patients' lives.



THE EVOLUTION OF TRI-STAPLE™ TECHNOLOGY

1960s

U.S. Surgical launches the
TA™ and GIA™ staplers



1980s

The TA90B™ — the first
bariatric stapler — is launch



2000s

DST™ technology
is introduced



2020

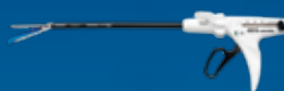
The smart Signia™
stapler leads the way
to stapling's future



Stainless steel and single-use
EEA™ staplers are introduced
1970s



The first endoscopic stapler makes MIS a
reality — and straight reloads are introduced
1990s



Tri-Staple™
technology is born
2010

